

■ PRO-5 PB | PORTABLE PIPE BEVELLER



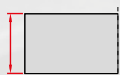
PRO-5 PB is a handy, portable pipe beveling machine suitable for milling edges of pipes made of carbon and stainless steels, aluminum alloys and copper-nickels.

It can be used efficiently by a single operator. Self-centering expandable mandrels provide quick and proper alignment to a pipe or a tube prior to machining operations.

Depending on the tool bits in use PRO-5 PB can perform external beveling, J-beveling, internal calibration and facing pipes from inside diameters of 32 mm (1.26") to outside diameters of 114 mm (4.49") or up to 140 mm (5.51") as option. All these weld prep operations are made fast and easy. Up to three tool bits can be mounted and work, simultaneously.

According to users preferences and depending on site conditions PRO-5 PB machine can be operated with a high quality powerful pneumatic motor or top quality high torque electric motor.

Optional small spindle disc and ratchet wrench enable pipe machining in difficult to access and space restricted areas.



Max wall thickness
12 mm (0.47")
up to OD 114 mm
(4.49")



ID 32-107 mm (1.26 - 4.21")
25-32 mm (1" - 1.25") /option/
107-133 mm (4.21 - 5.24") /option/



Facing off



Pipe OD beveling
114 mm (4.49") up to 140 mm
(5.51") /option/



J-groove beveling

| Technical specifications | PRO-5 PB with electric motor | PRO 5-PB with pneumatic motor | PRO 5-PB with battery motor |
|--|--|---|---|
| Electric motor | 1.100 W | - | - |
| Supply | 110-120 V / 50-60 Hz 220-240 V / 50-60 Hz | - | 18 V DC, 5.2 Ah |
| Rotational speed (nominal) | gear 1 – 0 to 90 rpm gear 2 – 0 to 300 rpm | 90 rpm | - |
| Pneumatic drive | - | 800 W | - |
| Air requirement | - | 0,6 MPa (87 PSI) | - |
| Air consumption | - | 1600 l/min (49.4 CFM) | - |
| Pipe diameter | 32 mm ID to 114 mm OD (1.26-4.49") ID 25-32 m 4.21"-5.24") /option/ ID 107-133 mm (4.21"-5.24") /option/ | 32 mm ID to 114 mm OD (1.26-4.49") ID 25-32 mm (1"-1.25") /option/ ID 107-133 mm (4.21"-5.24") /option/ | 32 mm ID to 114 mm OD (1.26-4.49") ID 25-32 mm (1"-1.25") /option/ ID 107-133 mm (4.21"-5.24") /option/ |
| Maximum pipe wall thickness for outside diameter | up to 114 mm | 12 mm (0.47") | 12 mm (0.47") |
| | 114-124 mm* | 10 mm (0.39") | 10 mm (0.39") |
| | 124-132 mm* | 8 mm (0.31") | 8 mm (0.31") |
| | 132-140 mm* | 6 mm (0.24") | 6 mm (0.24") |
| Weight (incl. motor) | 11 kg (24 lbs) | 10 kg (22 lbs) | 10 kg (22 lbs) includes battery |

* Available with the optional 140 mm spindle disk set.

Standard shipping set:

- PRO-5 PB (without motor, tool bits)
- Metal box
- Standard self-centering expandable mandrel for pipe ID Ø 32 – 107 mm (1.26 – 4.21")
- 118 mm spindle disc
- Jaw blocks (1,2,3,4,5,6) – 3 sets
- Set of tools
- Coolant container
- Operator's manual

Product Code: UKS-0472-10-00-00-0



Electric motor 230 V with connection set



Electric motor 230 V
Product Code: SLN-000176

Connection set for electric motor
Product Code: ZST-0472-11-00-00-1

Pneumatic motor
Product Code:
NPD-0472-03-00-00-0



Battery drive 18 V with connection set



Connection set for battery drive
Product Code: ZST-0472-22-00-00-0

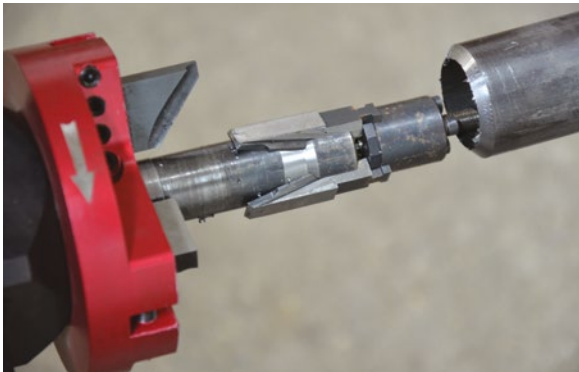


Battery drive for PRO-5 beveller
incl. 2 batteries 18 V, 5.2 Ah
Product Code: WRT-000021

Optional accessories:



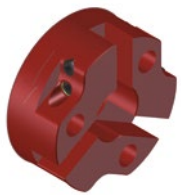
Small mandrel
ID 25 – 32 mm (1" – 1-1/4")
Product Code: TRZ-0472-21-00-00-0



Battery charger 18 V
Product Code for Europe: LDW-000008
Product Code for USA: LDW-000009
Product Code for UK: LDW-0000010



Battery 18 V, 5.2 Ah
Product Code: AKM-000087



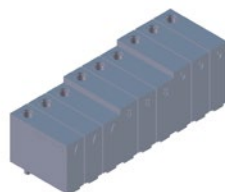
75 mm spindle disc
Product Code:
TRC-0472-12-00-00-0



Minimum distance between
tubes is 75 mm (2.95")



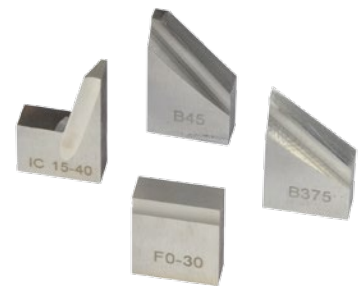
Ratchet wrench
Product Code: KLC-000045



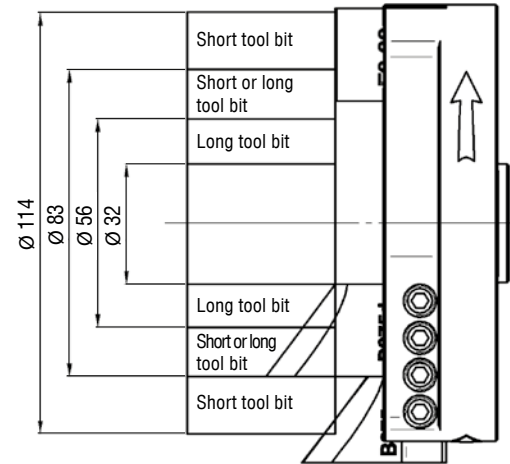
Extension set for OD Ø up to 140 mm (5.51") including 140 mm
spindle disc and jaw blocks (7, 8, 9) – 3 sets
Product Code: ZST-0472-15-00-00-0



| | | |
|--|-------------------------------------|--|
| NOZ-000031 for steel NOZ-000067 for stainless steel | F0-30 0° facing tool bit | |
| NOZ-000032 for steel NOZ-000034 for stainless steel | B30 30° bevelling tool bit* | |
| NOZ-000033 for steel NOZ-000035 for stainless steel | B30d 30° bevelling tool bit** | |
| NOZ-000036 for steel NOZ-000038 for stainless steel | B375 37.5° bevelling tool bit* | |
| NOZ-000037 for steel NOZ-000039 for stainless steel | B375d 37.5° bevelling tool bit** | |
| NOZ-000040 for steel | B45 45° bevelling tool bit* | |
| NOZ-000041 for steel | B45d 45° bevelling tool bit** | |



Wide range of tool bits for various applications.



Together with 0° facing tool bit either standard or long beveling tool bits are in use depending on pipe diameter



Stainless steel machining is available by means of special tool bits

Tool bits for stainless steel feature TiAlN coating
* for diameters over 56 mm, if works together with 0° facing tool bit
** for diameters under 83mm, if works together with 0° facing tool bit

| | | |
|-------------------------|--|--|
| NOZ-000052 for steel | IC15-40 15° internal calibration tool bit | |
| NOZ-000053 for steel | IC15-40 15° internal calibration tool bit (for diameters over 56 mm) | |
| NOZ-000058 for steel | J10-R6 10° J-bevelling tool bit | |
| NOZ-000057 for steel | J15-R2 15° J-bevelling tool bit | |
| NOZ-000059 for steel | J20-R8 20° J-bevelling tool bit | |



HD-CUT OIL 1 - tapping, drilling and machining fluid

Product codes:

OLJ-0505-09-00-00-0 (0.5 kg)

OLJ-0505-10-00-00-0 (1.0 kg)

OLJ-0505-11-00-00-0 (5.0 kg)



Air preparation set
Product Code:
ZST-000021



PROMOTECH Sp. z o.o.
ul. Elewatorska 23/1, 15-620 BIAŁYSTOK, POLAND
tel. (+48 85) 678 34 05, fax (+48 85) 662 78 77
marketing@promotech.eu www.promotech.eu

Your local dealer:

